



---

# VisualLog

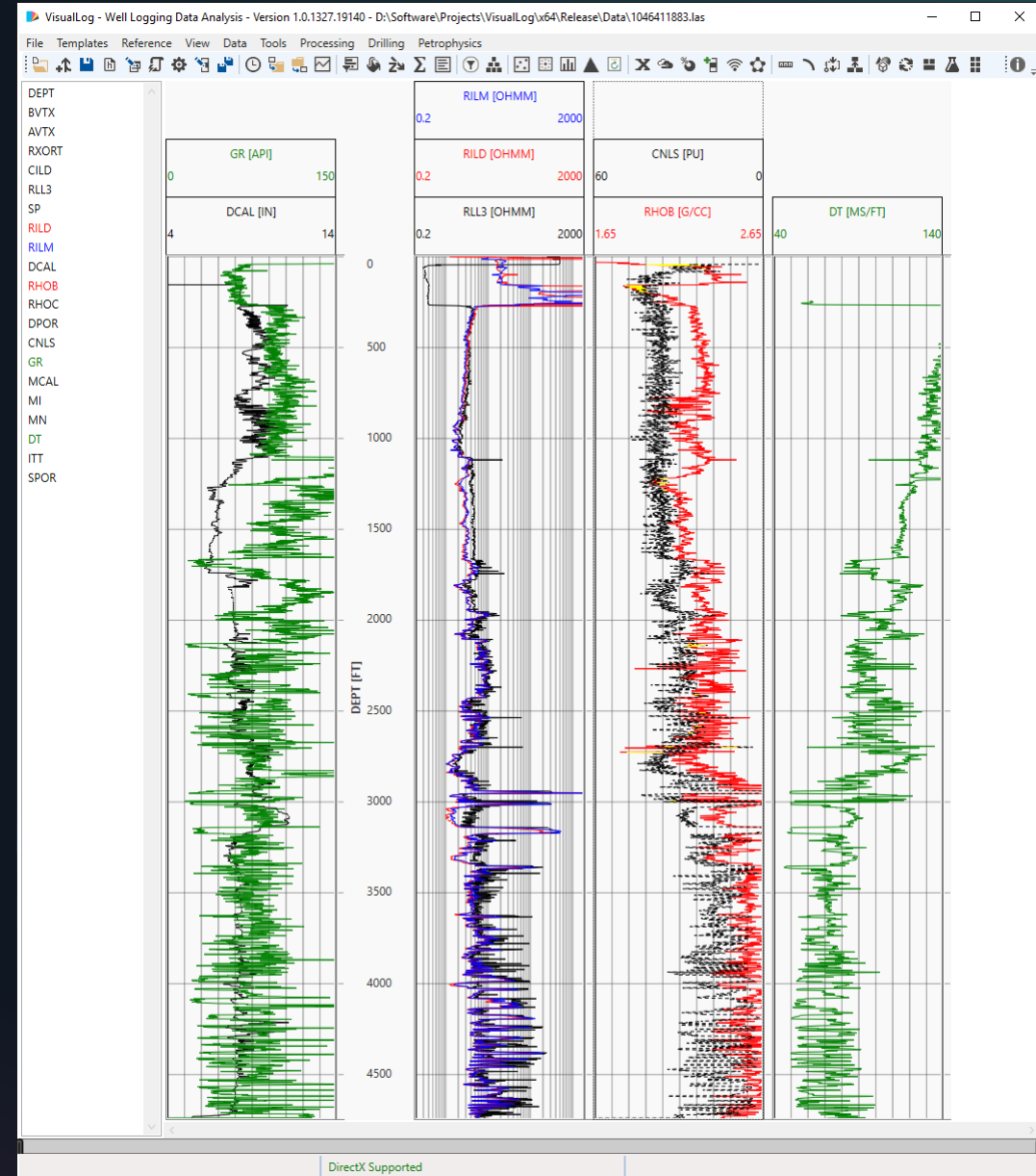
**A Modern Advanced Log Analysis Software**

Innovative Downhole Solutions  
Houston, Texas

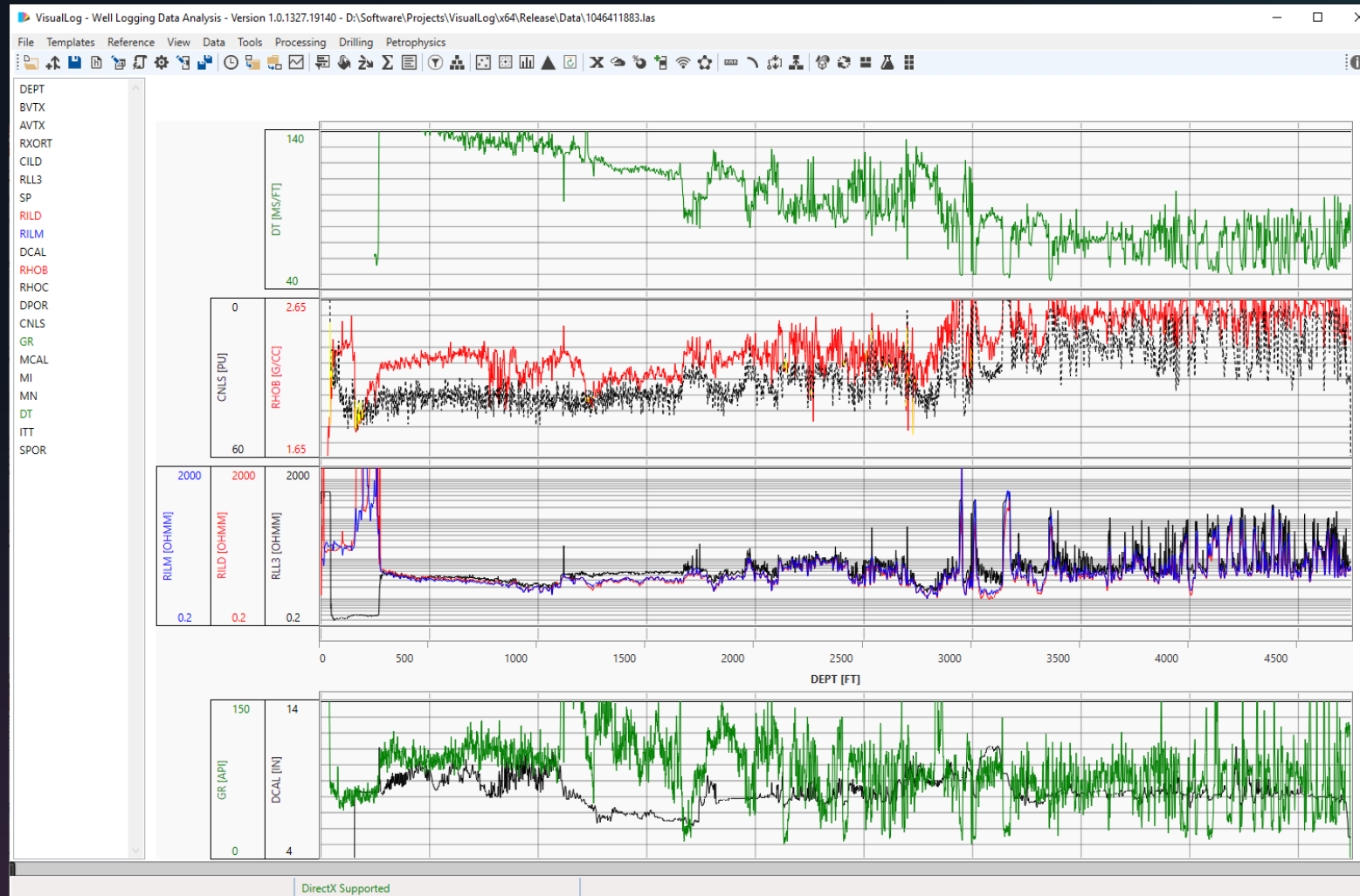
---

# Basic Display

- Track1: Gamma and caliper
- Track2: Resistivities on log scale
- Track3: Neutron/Density with cross over color fill
- Track4: Sonic Delta T

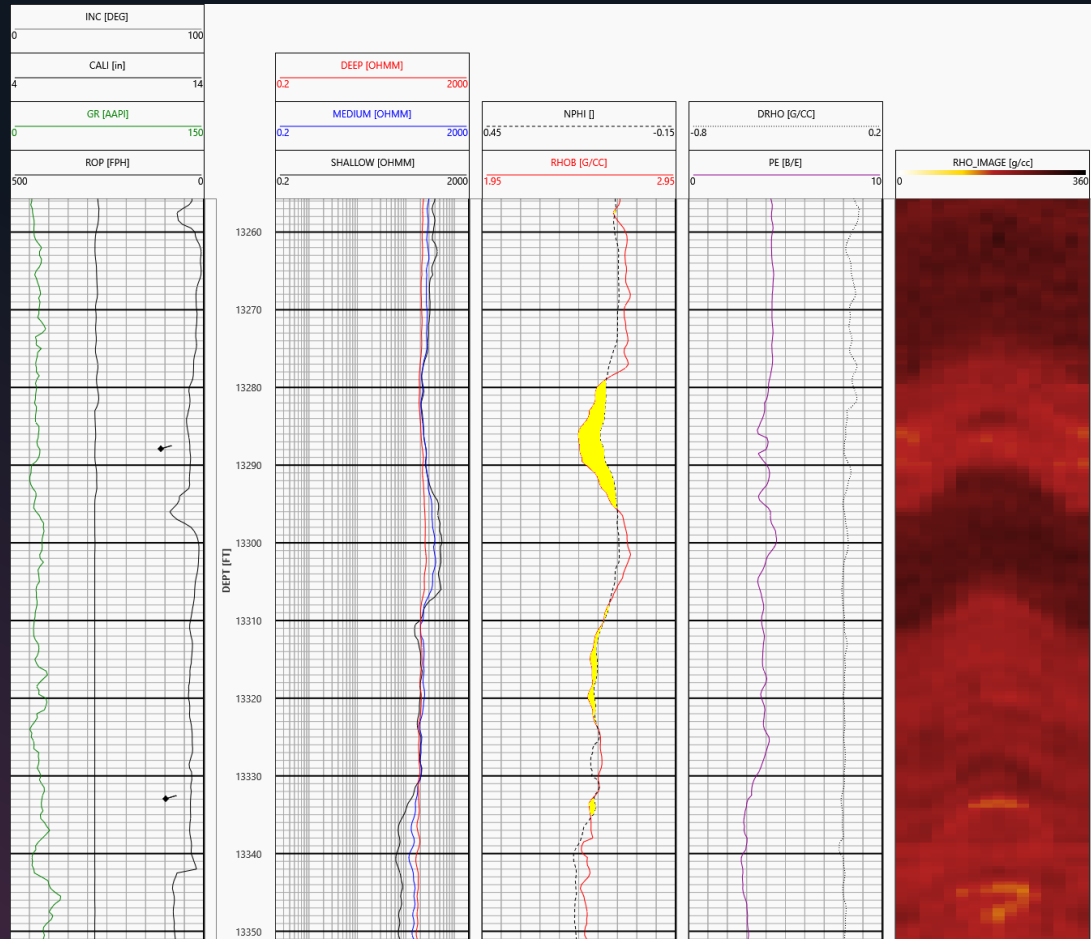


# Horizontal Display

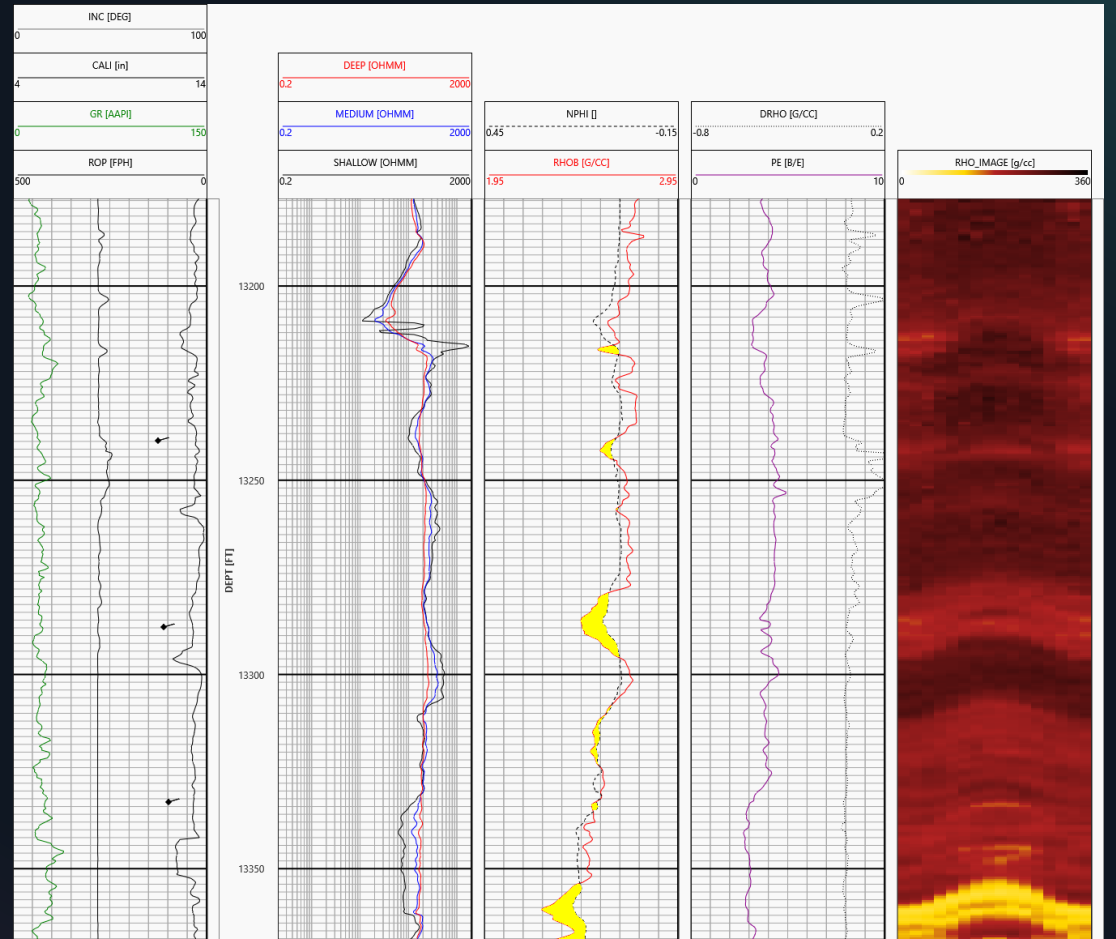


# Scaled Display

1:240



1:120



# Curve Attributes

Template: Depth Description: Depth

General | Curve | Distribution

Curves: TVD Data Density:  Track: 0

Left: 0.000 Right: 0.000 Auto Scale:  Font Family: Segoe UI

Major Ticks: 1 Minor Ticks: 10 Font Size: 12

Filter Type: Nearest Filter Window: 3 Filter Resolution: 0.5 Font Weight: Normal

Cancel Apply

Template: Depth Description: Depth

General | Curve | Distribution

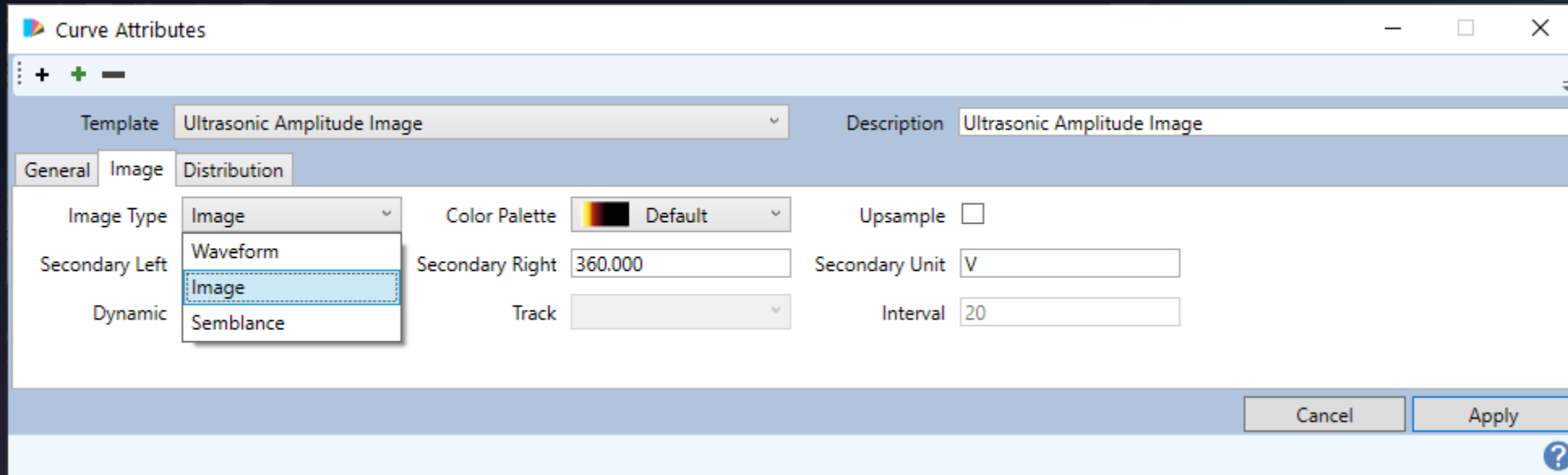
Marker Type:  Square Size: 0 Color:  Black Log Scale:

Line Style:  Solid Thickness: 1 Color:  Blue Wrap High:

Fill Color:  Yellow Fill To: None Curve: Font Weight: Normal Wrap Low:

Cancel Apply

# Image Attributes



# Data Manipulation

Curve	Filter	Window	Resolution
<input type="checkbox"/> DEPTH	Smooth	3	0.5
<input checked="" type="checkbox"/> VANHY	Nearest	3	0.5
<input checked="" type="checkbox"/> VDOL	Nearest	3	0.5
<input checked="" type="checkbox"/> VLIME	Nearest	3	0.5
<input checked="" type="checkbox"/> ANHY	Boxcar	3	0.5
<input checked="" type="checkbox"/> CALC	Smooth	3	0.5
<input type="checkbox"/> DOL		3	0.5
<input type="checkbox"/> PHIE		3	0.5
<input type="checkbox"/> PSW		3	0.5
<input type="checkbox"/> PSXO		3	0.5
<input type="checkbox"/> SW		3	0.5
<input type="checkbox"/> SXO		3	0.5
<input type="checkbox"/> GR	Exponential	3	0.5

Fill Gap: Interpolate  
Fill Interval (FT | M | S): 5.000

Depth Shift: Constant  
Shift by (FT | M | S): -3.000

# Curve Math

- If, Else If, Then, Else
- If and Else If with And/Or
- =, <, >, !=, >=, <=
- Math functions (exp, log ....)
- Explicit or inherited depth
- Templates

Curve Math

Curve Name: NPHI Units: PU

Description:

Depth Range Depth Start: 0 Depth Stop: 0

Depth From Curve:

If: EYELAT < 0.75 And RPM < 0.02

Then: PPOPOP-POPOV

Else If: EYELAT > 1.5 And RPM > 10

Then: 1

Else: -1

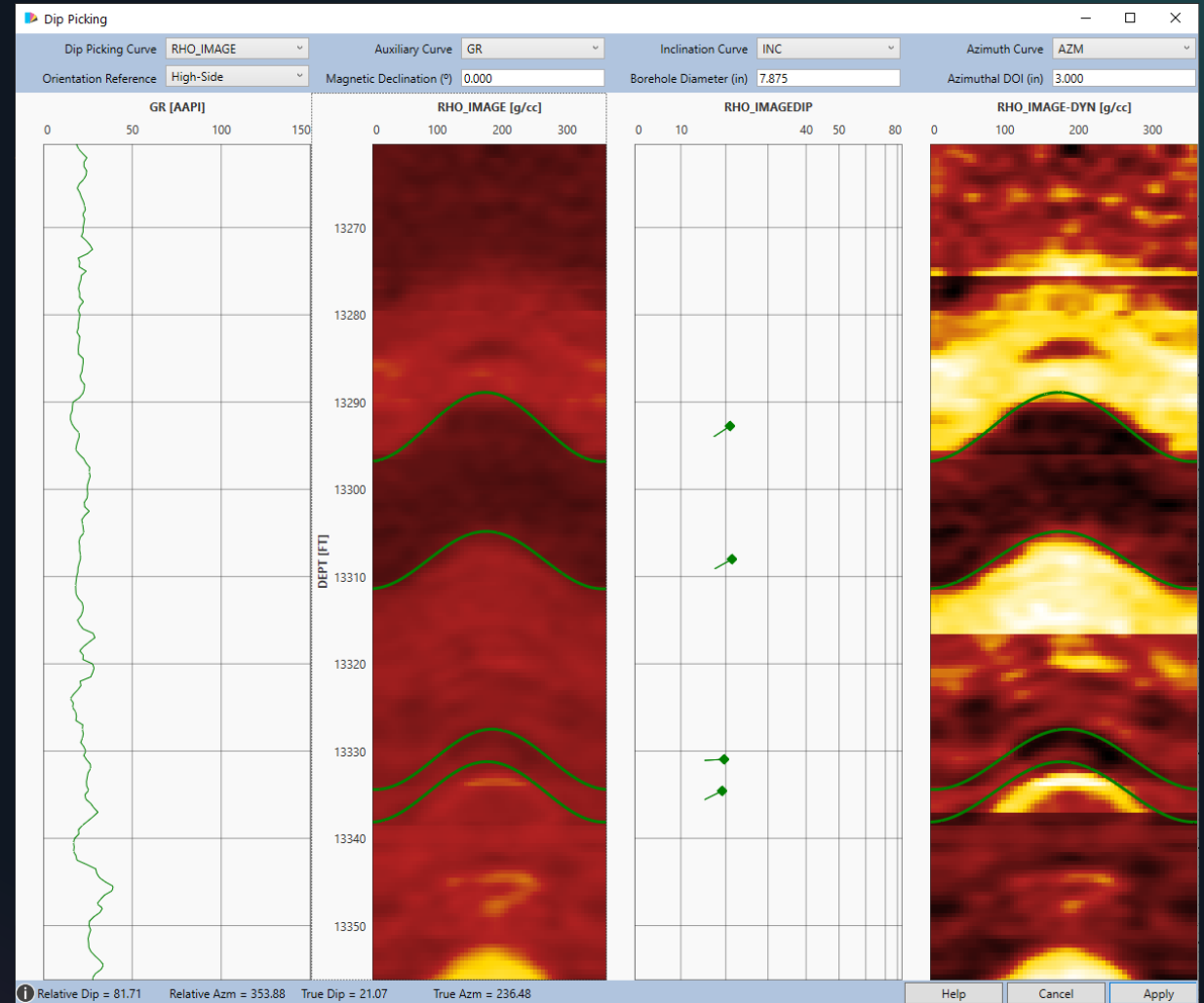
Math Function: Add Remove  Interpolate Nulls

Cancel Apply



# Dip Picking

- Single click to create sinusoid
- Mouse control of height and position
- Automatic calculation of apparent and true dip
- Picking from static or dynamic images
- Auxiliary reference curve display



# Semblance Processing

Semblance Processing

General Semblance Processing

Receiver 1 Waveform Curve	R1WV	Receiver 2 Waveform Curve	R2WV
Receiver 3 Waveform Curve	R3WV	Receiver 4 Waveform Curve	R4WV
Receiver 5 Waveform Curve	R5WV	Receiver 6 Waveform Curve	R6WV
Receiver 7 Waveform Curve		Receiver 8 Waveform Curve	

Sample Rate (us) 5.000 Selected Receivers 1,2,3,4

First Receiver Offset (ft) 4.000 Receiver Spacing (ft) 0.500

Tool Diameter (in) 7.250 Borehole Diameter (in) 8.500

Mud Slowness (us/ft) 245.000  Mud Slowness Curve

Mud Line Projection Curve SEML Max Coherence Projection Curve SEMC

STC Map Curve STC  SFC Map Curve SFC

Mud Line Energy Curve ERGL  Max Coherence Energy Curve ERGC

Filtered Waveform Curves -FF  Frequency Spectrum Curves -FS

Entire 0.000 0.000 Cancel Apply

Semblance Processing

General Semblance Processing

Threshold (V   mV)	0.000	Threshold Attenuation (dB/ft)	0.000
Blanking Time (us)	300.000	Blanking Time Movement (us/ft)	0.000
Tool Mode File	Tool5.csv	<input type="checkbox"/> Subtract (Fraction)	1
Projection Filter	Sharpen	Projection Filter Order	11
Filter Type	Gaussian	<input checked="" type="checkbox"/> Filter Common Mode	Median
Filter Center Frequency (KHz)	11.000	Filter Std Deviation (KHz) / Q	2.500
Filter Lower Frequency (KHz)	8.000	Filter Upper Frequency (KHz)	18.000
Filter Lower Std Deviation (KHz)	2.000	Filter Upper Std Deviation (KHz)	4.000
Filter Lower Order	1	Filter Upper Order	1

Mud Line Projection Curve SEML Max Coherence Projection Curve SEMC

STC Map Curve STC  SFC Map Curve SFC

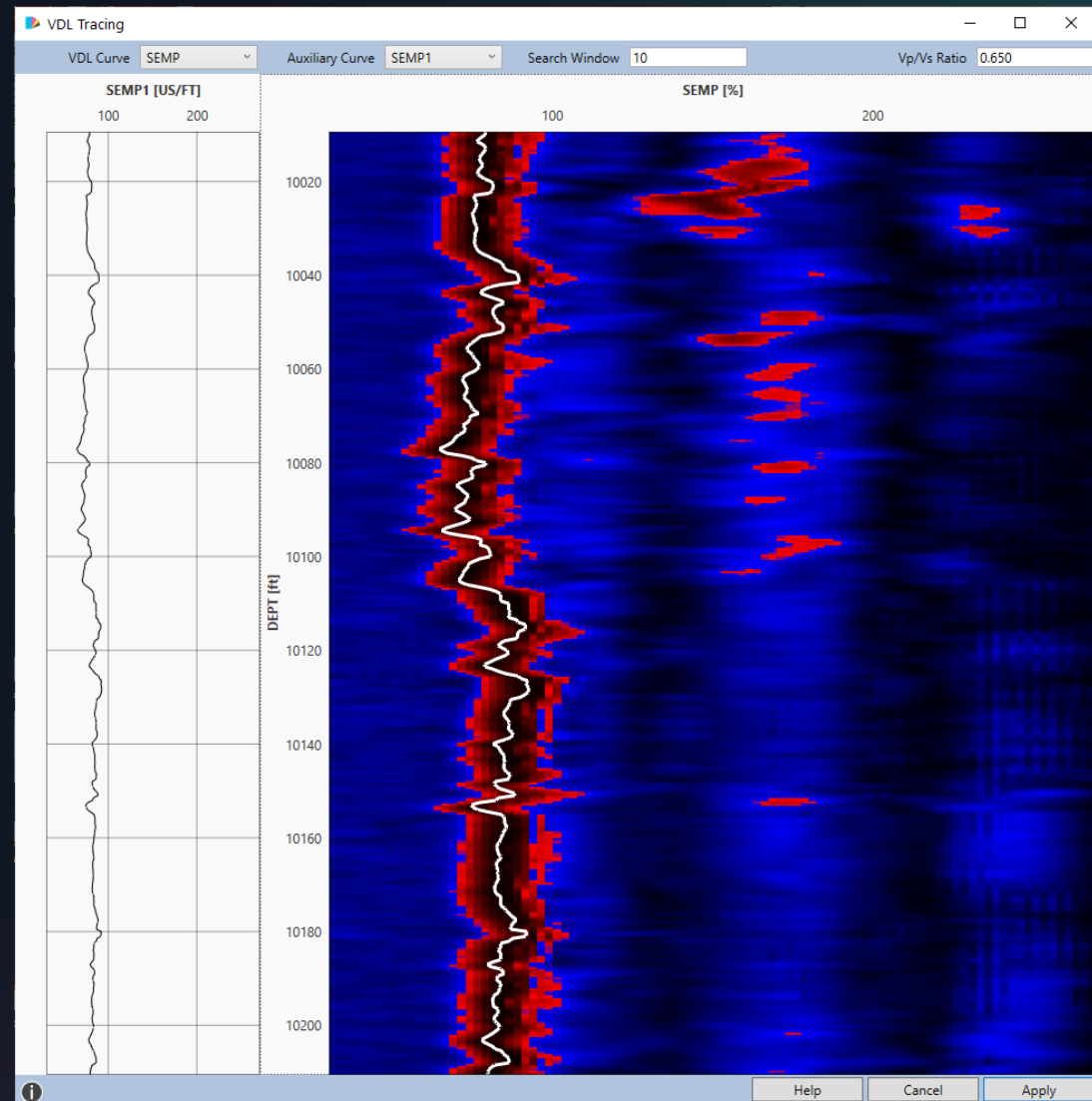
Mud Line Energy Curve ERGL  Max Coherence Energy Curve ERGC

Filtered Waveform Curves -FF  Frequency Spectrum Curves -FS

Entire 0.000 0.000 Cancel Apply

# Sonic VDL Tracing

- Single click to trace arrivals
- Mouse control for edit and seeding up and down
- Vp/Vs guideline
- Auxiliary reference curve display



# Time-Depth Correlation

- Time depth data from variety of sources with different formats
- Binary time-based data from different suppliers
- Automatic calculation of curve distances from predefined sensor distances
- Increasing, decreasing, and/or constant depth selections
- ROP and FET calculations
- Utility functions to depth and time search



**THANK YOU!**

**Medhat Mickael**

*Phone:*

**832-827-2908**

*Email:*

**[mmickael@innovatedhs.com](mailto:mmickael@innovatedhs.com)**

*Website:*

**<http://www.innovatedhs.com>**

